

Zeitindah kan in bawmh khawh lai

Hakha Chin



Kan sin i bia na chim tikah, nangmah na si le nangmah a si lo hngalhnak dingah bia kan in hal lai.

Hi nih na konglam him tein chiah awkah a kan bawmh.



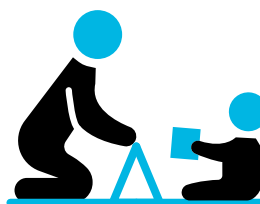
Kan sin in na hmuh khawhmi phaisa le bawmhnak cu na dirhmun cungah aa hngat.

Bawmhnak na herh, thilsining kong asiloah thil pakhatkhat aa thleng ahcun kan riantuantu hna he bia i ruah.



Family Tax Benefit (Chungkhar Ngunkhuai Bawmhnak) cu an fale zohkhenhnak caah nulepa bawmhnak phaisa a si.

Chungkhar dihlak bawmhnak caah nulepa pakhat sinah kan pek.



Rian na tuan lio le ca na cawn lio ah na fa cu ngakchia zohkhenhnak ah a kal ahcun, Child Care Subsidy (Ngakchia Zohkhenhnak lei Bawmhnak) nih na fa zohkhenhnak man a tlawmter khawh.



Rent Assistance (Inn hlan man Bawmhnak) cu inn man na pek i kan sin in aa tlakmi phaisa na hmuh ahcun a hlei in punghmaan na hmuh khawhmi tangka a si.

Na i thial asiloah na inn hlan man aa thlen ahcun na kan chimh hrimhrim lai.



Rian na tuan asiloah tangka dang na hmuh ahcun ni 14 chungah na kan chimh a hau.

Hihi cu a dikmi zat kan in pek khawh nakhnga caah a si.



Kanmah he pehtlaihnak bawmh dingah na zumhmi pakhatkhat na ngei kho. Nominee (Chuahpimi minung) tiah kan auh hna.

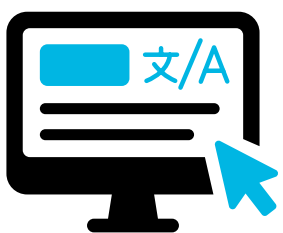
An kan chawnh khawh, thilsining an kan chimh khawh asiloah nangmah caah phaisa an hmuh khawh.

Hihi ngol na duh ahcun zeitik caan paoh kan theihter.



Social workers (Mibu ca riantuantu pawl) nih harnak an ton tikah mi an bawmh khawh hna. Na lungre an theihter mi asiloah na lung a fahter mi kong kha na chimh khawh hna.

An ngaih lai, thilaining an in chimh lai i bawmh nak dang kong an in chimh lai.



Holh dang in rel khawhmi, ngaih khawhmi asiloah zoh khawhmi thawngpang kan ngei, hika ah servicesaustralia.gov.au/yourlanguage



131 202 ah na kan chawnh khawh asiloah riantuanpiaknak hmun ah na kal khawh.

Na kan chawnh asiloah na kan len tikah holhlettu na herh ahcun kan theihter.

How we can help you



When you speak to us, we ask you questions to make sure it is you and not someone pretending to be you.

This helps us to keep your details safe.



The payments and help you can get from us depends on your situation.

Talk to our staff if you need help, information or if something changes.



Family Tax Benefit is money to help parents take care of their children.

We pay it to one parent to help the whole family.



If your child goes to child care while you work or study, Child Care Subsidy can help lower your child care costs.



Rent Assistance is an extra regular amount you may get if you pay rent and get an eligible payment from us.

If you move or your rent amount changes, you must tell us.



If you work or get other money, you must tell us within 14 days.

This is so we can pay you the right amount.



You can have someone you trust to help you deal with us. We call them a nominee.

They can talk to us, give us information or get payments for you.

Let us know if you want to stop this at any time.



Social workers can help people when they have problems. You can tell them about things that make you feel worried or distressed.

They will listen, give you information and tell you about other help.



We have information you can read, listen to or watch in other languages at servicesaustralia.gov.au/yourlanguage



You can call us on **131 202** or go to a service centre.

Let us know if you need an interpreter when you call or visit us.