

The Australian Government agency,  
Services Australia wrote this.



When you see the word **we**, **us** or **our** it  
means **Services Australia**.



When you see the word **you**, it means the  
person reading the document.



We wrote this in an easy to read way.



We have some words in **bold**.

This means the letters are thicker  
and darker.



These are important words.



This is an Easy Read summary of another document.



This means it has the most important ideas.



You can ask for help to read this document.

You can ask

- a friend
- family members
- a support person.



We recognise Aboriginal and Torres Strait Islander people as the Traditional Owners of the land we live on.



They were the first people to live on and use the

- land
- waters.

# What is Inclusive Employment Australia

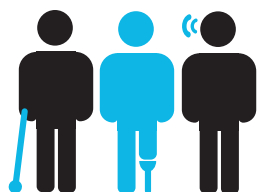


Inclusive Employment Australia is a new program. It is run by the Department of Social Services or DSS.



Inclusive Employment Australia started on 1 November 2025.

It replaced **Disability Employment Services**.



Inclusive Employment Australia helps people with disability, injury or health conditions find and keep a **job**.



A **job** is a task or work that you do to get paid.



If you take part in Inclusive Employment Australia, your provider will:

- get to know your needs
- help you prepare for work
- help you find a job
- support you to keep your job.



There are many providers who can help you.



These providers know how to work with people from different backgrounds and who have different disabilities.



Most of the time:

- you may choose a provider that suits you
- you can change your provider at any time.



# How it can support you

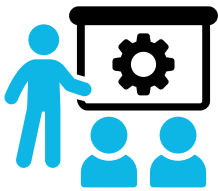


## If you are looking for work

If you are looking for work, Inclusive Employment Australia can help you:



- get ready for work
- learn new skills for work



- do training



- write a resume
- practice for job interviews

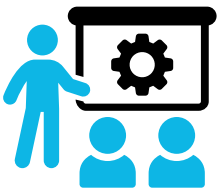


- get work experience
- try a work trial.



## If you are working

If you are working, you can still get help.



You can get:

- training while you work
- ongoing support from someone at your workplace
- help for your employer to support you.



You can get help for as long as you need it.

# How to get help from Inclusive Employment Australia



Not everyone can take part in Inclusive Employment Australia.



We check if you can take part.

If you get an **income support payment** from us, we may refer you to Inclusive Employment Australia.



An **income support payment** is a regular payment that helps you with living costs.



You may need to have an **Employment Services Assessment**.

The Employment Services Assessment looks at:



- what kind of work you can do

- how many hours you can work each week



- what help you might need.



If you do not get a payment from us, you can talk to a provider to find out if they can help you.



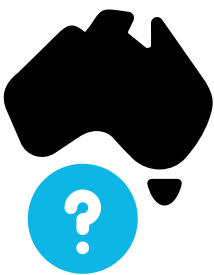
You can find a provider on the **Job Access website**.  
[www.jobaccess.gov.au/find-a-provider](http://www.jobaccess.gov.au/find-a-provider)



You can use the **Job Provider Tool** on the website.



The Job Provider Tool helps you to search for a provider in your area by entering the:



- postcode
- suburb
- town
- location.



# Find more information



To find out who can get help from Inclusive Employment Australia, you can:

Talk to your current provider if you have one.



You can call JobAccess on 1800 464 800.



You can look at the DSS website at [www.dss.gov.au/inclusive-employment-australia](http://www.dss.gov.au/inclusive-employment-australia)



DSS also have Easy Read guides under the resources section on their website.

Their guides provide more information about Inclusive Employment Australia.

They can help you know more about who can take part in Inclusive Employment Australia, what you need to do, and how to choose and work with a provider.